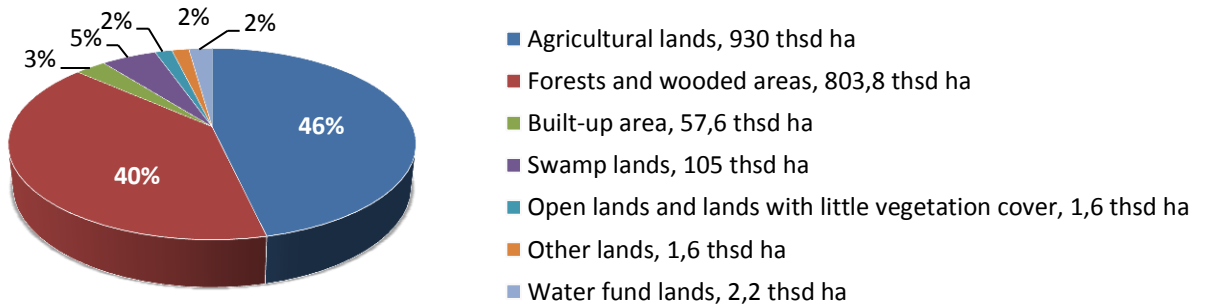


**GENERAL INFORMATION**

In Rivne region agricultural production is traditional. Beet growing, arable farming, meat and dairy cattle-breeding and pig breeding are typical for Southern part of Rivne region. In the Northern part meat and dairy cattle-breeding, sheep breeding, flax cultivation and potato growing are developed.

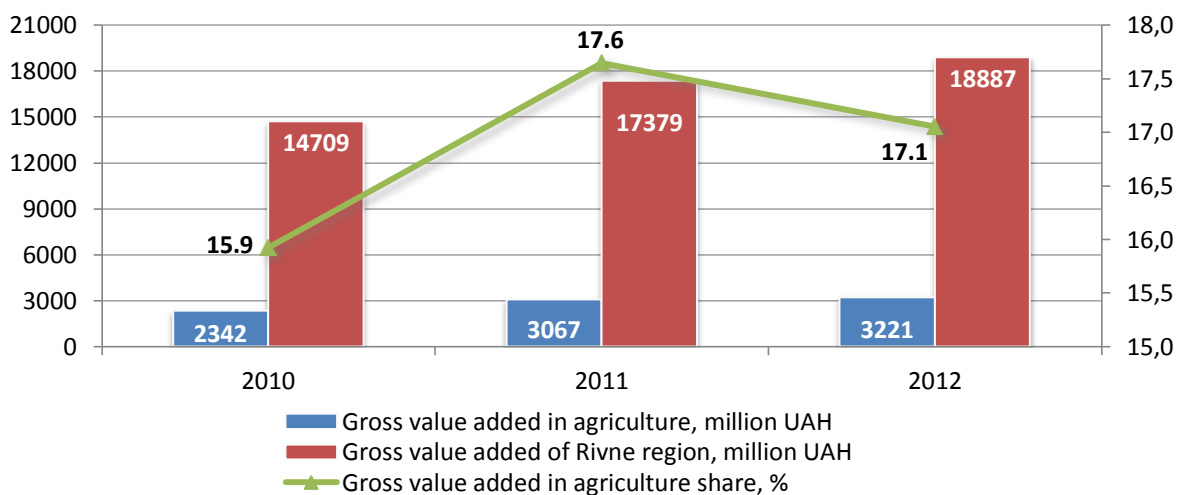


**Figure 1. Rivne Region Land Structure, %**

Rivne region land has an area of 2005.1 thousand hectares, 46% (930 thousand hectares) of which belong to agricultural lands. Soils of Southern part of the region are fertile of winter and spring wheat, spring barley, cereals, sugar beet, winter and spring rape.

Soils of Southern part of the region are fertile of winter rye, oats, flax, potato and fodder crops.

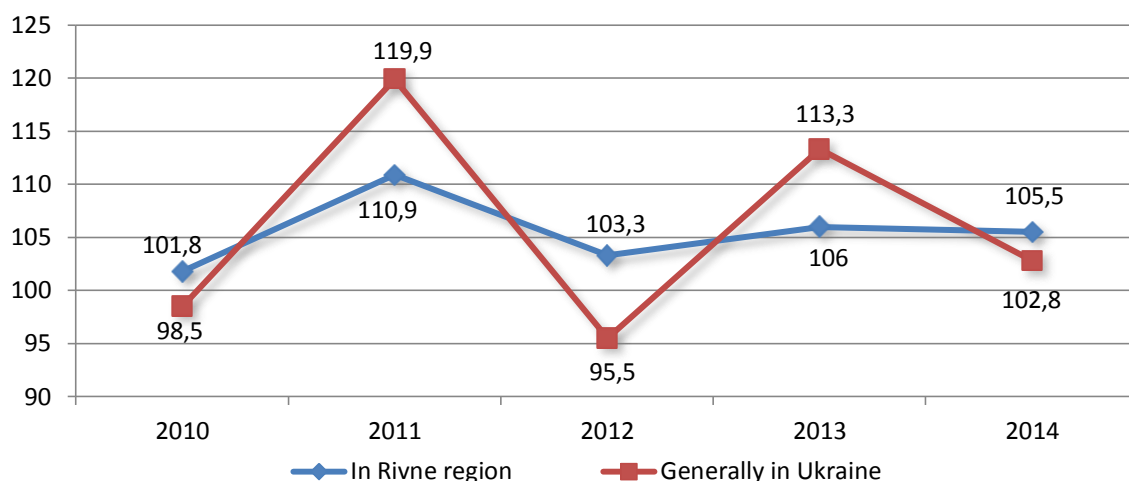
Share of agriculture is second after industry share in gross regional product of Rivne region. In 2010-2012 this figure fluctuates from 15.9% in 2010 to 17.6% in 2011. In 2012 it stabilized at the level of 17.1%. Nevertheless, the value added in agriculture demonstrates constantly growing trend in absolute terms (Figure 2).



**Figure 2. Dynamics of Rivne region gross value added, gross value added in agriculture and its share in 2010-2012**

One fifth of the working people in the region is engaged in agriculture. As of January 1, 2014 this rate was 18.9%, that is 0.3% more than the same date previous year.

Agriculture is the only sector of Rivne region economy that demonstrates continuous growth (Figure 3).



**Figure 3. Index of agricultural production in Rivne region and overall in Ukraine, 2010-2014, %**

In 2014 index of agricultural production, compared to the same period of 2013 was 105.5%. This index was 109.5% in agricultural enterprises and 102.3% - in households. Index of production in crop sector was 106.3%, in livestock sector – 100.7%.

### Crop Farming

Share of crop farming products is 64.3% in gross production of agricultural products in Rivne region. The main products are cereal crops, sugar beet and potato (Table 1).

**Table 1**

**Production of the main products in crop farming in 2010-2014, thousand centners**

Crop Farming Products	Years				
	2010	2011	2012	2013	2014*
Cereal crops and pulse plants	6357.8	7904.8	9183.6	11085.8	12227.2
Sugar beets (factory-made)	10105.1	10031.2	9076.8	5313.5	5396.9
Sunflower seeds	29.8	45.1	78.5	40.9	58.7
Potato	10644	13778.5	13349.6	12992.2	13040.8
Vegetables	2164.7	2371.1	2505	2555.3	2486.8
Fruits and berries	859.1	880.6	805.6	1129.5	1191

\*preliminary data

The biggest cultivation areas are allotted to crops – over half of total cultivation area (57.2%) in 2013. Average yield of crops and pulse plants was 42.1 centners per hectare in 2014, that is 2.2 centners per hectare more than average for Ukraine.

At the same time, yield of sugar beets was 434.9 centners per hectare, which is 8.3% more than average for Ukraine.

### Livestock Farming

Share of animal produce is 35.7% in gross production of agricultural output in Rivne region. As of January 1, 2014 population of livestock was 183.3 thousand heads, including cows - 116.9

thousand heads. Population of pigs and poultry was 347.3 and 6471.7 thousand heads respectively. The main products are meat (dead weight), milk, eggs and wool (Table 2).

**Table 2**  
**Production of animal products, 2010-2014**

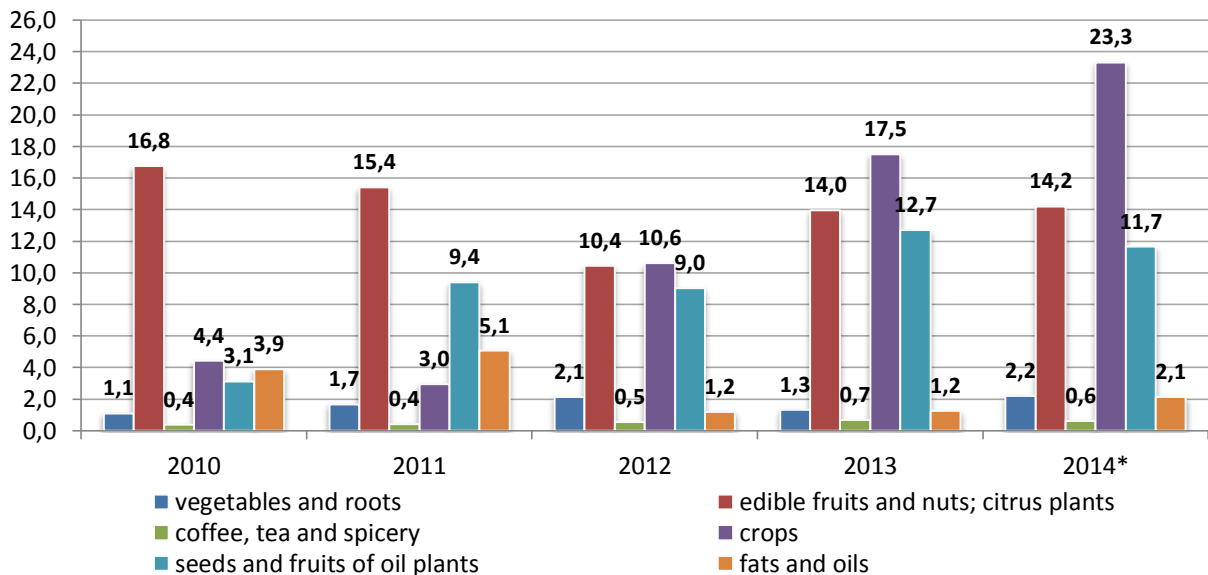
Animal produce	Years				
	2010	2011	2012	2013	2014*
Meat (dead weight), thousand tons	49.9	55.4	56.2	59.1	88
Milk, thousand tons	432.7	420.2	442.6	453.4	458.5
Eggs, million pieces	433.8	446.6	490.4	514.9	521.1
Wool, tons	20	23	22	22	-

\*preliminary data

In the structure of livestock and poultry for slaughter, share of poultry was 70%, including broilers – 100%; pigs – 15.8%, livestock – 14.2%.

## EXPORT AND IMPORT OF PRODUCTS

Share of agricultural products was nearly 12.5% in total Rivne region export in 2014.



\*January – November

**Figure 4. Dynamics of export of some agricultural products in Rivne region, 2010-2014, \$ million**

The main products that are supplied to foreign markets are cereals, edible fruits, nuts and seeds and fruits of oil-bearing-crops.

Crops, edible fruits and nuts and seeds and fruits of oil plants are the main articles of export.

Share of agricultural products was 7.9% in total Rivne region import in January–November 2014. Fish and crustaceans, seeds and fruits of oil plants, coffee, tea spicery and vegetables were the main articles of import in January–November 2014.

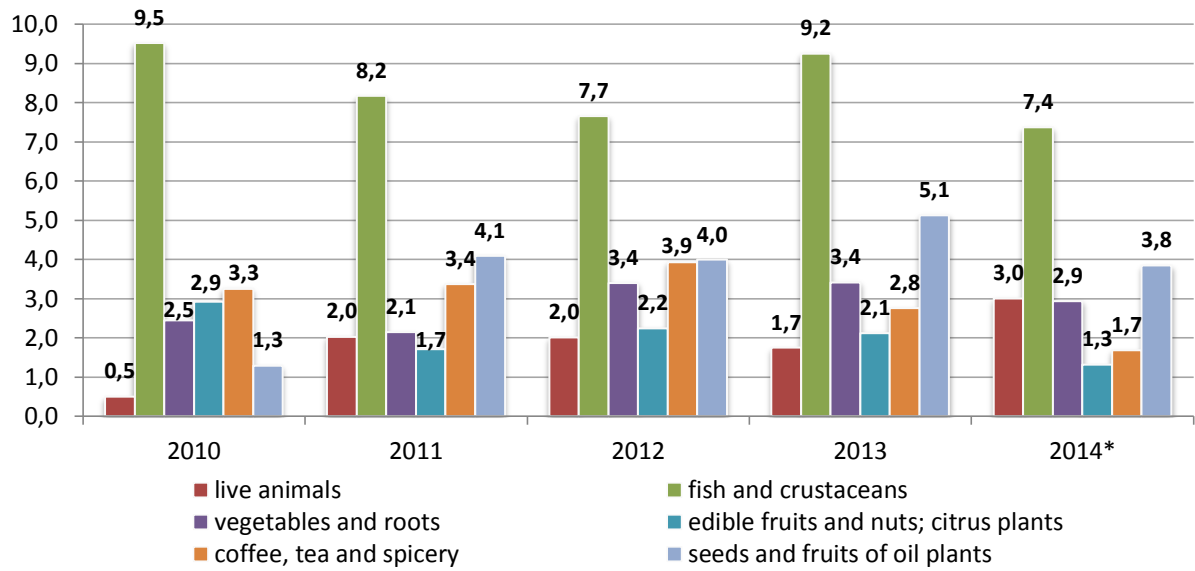


Figure 5. Dynamics of import of some agricultural products in Rivne region in 2010-2014, \$ million

### ENTERPRISES OF RIVNE REGION

The biggest enterprises of region's agriculture are: Agri-corporation «Krupets», limited liability agricultural enterprise named after Vilovikov, private enterprise «Agro-Expres-Service», limited liability company «Radyvyliv Elevator», agricultural enterprise «Beskydy», limited liability company «Dadens Agro», agricultural enterprise «Dobryi Uroжай», agricultural enterprise «Novyi Dvir», agricultural enterprise «Kamaz-Agro», limited liability company «Krupetz feed mill», agricultural enterprise «Sluch», agricultural enterprise «Majak» are the biggest agricultural enterprises in Rivne region.