

GENERAL INFORMATION

Mining industry of Rivne region is represented with quarries, where crushed stone is extracted and processed. Amber and semiprecious stones are extracted in the North of the region. Moreover, amber deposits prospected in Rivne region are the only in Ukraine. Besides, basalt, granite, kaolin, sand, clay and energy-yielding material – peat – are also produced in Rivne region.

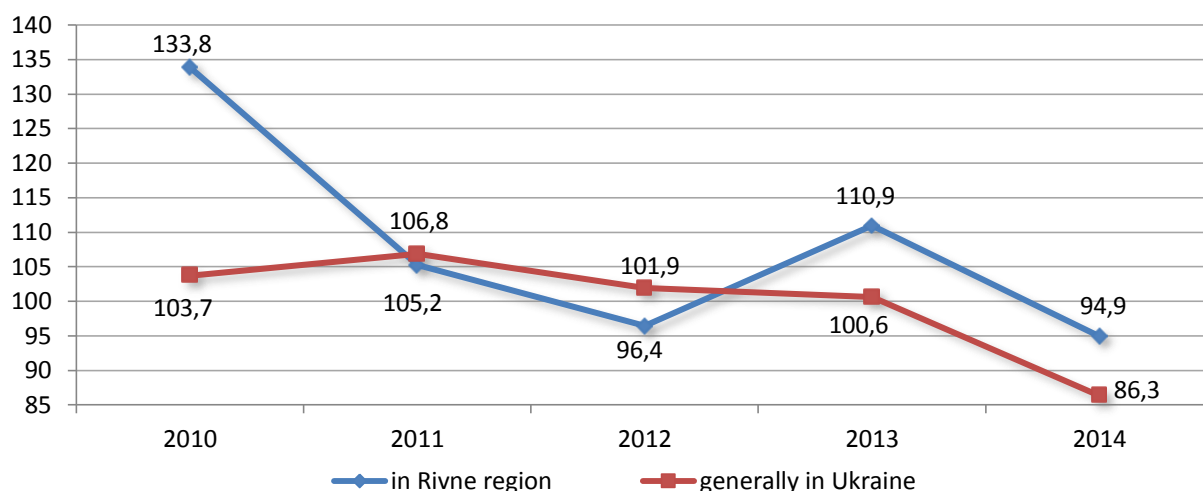


Figure 1. Index of mining industry production in Rivne region and overall in Ukraine, 2010-2014, %

Until 2012 mining industry output demonstrated upward drift, but in 2012 there was some slump in production. In 2014 mining industry production decreased by 5.1% as compared to corresponding period in 2013 (Fig. 1). In the last five years 6 new quarries of building stone, 7 quarries of sand and one amber quarry («Volodymyrets Shidnyi») were explored in Rivne region. One can observe the growth of building stone reserves at 54.2 million m³, sand – at 3.8 million m³, and amber – at 12.5 tons.

Sand, clay and chalk deposits, cement raw materials deposits and deposits of raw materials for mineral wool production are among the biggest quarries in terms of materials extracted (Table 1). Granites, granodiorites and basalts etc. are widely used as building stone.

Table 1

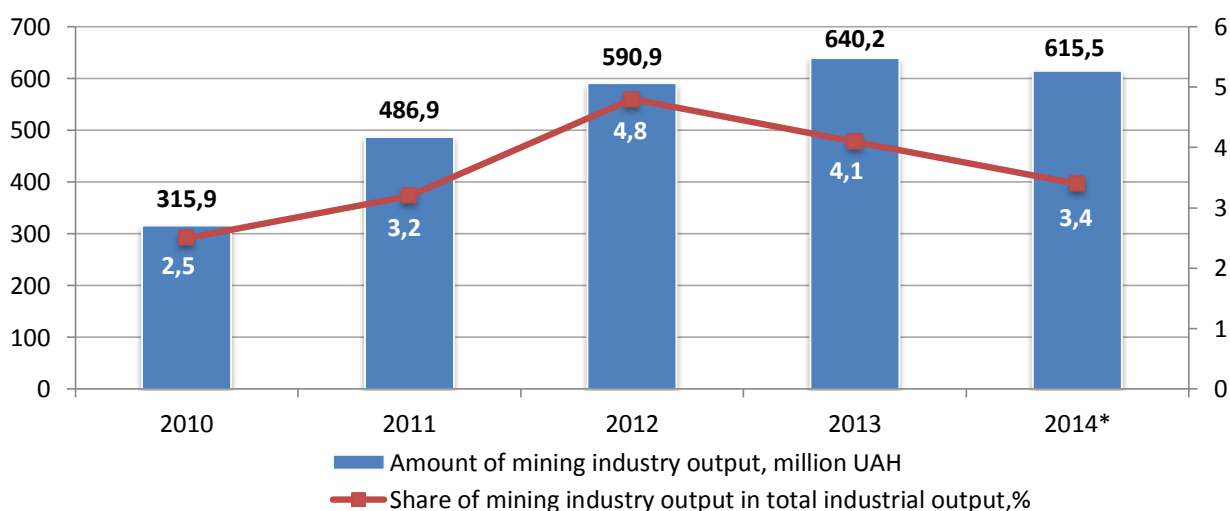
Mineral resources of Rivne region and its use as of 01.01.2014

Minerals	Number of deposits		Unit	Reserves
	Prospected	In industrial use		
Peat	125	12	thsd tons	135891
Agrochemical materials (phosphorites)	1	1	thsd tons	3536
Carbonate raw material for soil	2	1	thsd tons	2140
Feldspar	3	1	thsd tons	342
Kaolin	2	1	thsd tons	3865
Cement raw materials	2	1	thsd tons	392538
Glass materials	2	1	thsd tons	2904
Building chalk	5	3	thsd. m ³	31443
Facing stone	7	5	thsd. m ³	10868

Table 1 continuation

Building stone	43	35	thsd. m ³	661709
Mortar sand	27	13	thsd. m ³	66579
Brick clay	51	12	thsd. m ³	47835
Materials for mineral wool	4	2	thsd tons	428172
Precious stones (amber)	3	2	tons	128
Mineral waters	6	4	m ³ /day	1736
Fresh water	36	21	thsd m ³ /day	429
Sapropel	37	-	thsd tons	7655
Total:	356	115		

Share of value added in mining industry in Rivne region gross value added is rather insignificant. It did not exceed 2,1% in last 3 years. Simultaneously, share of mining industry is slightly higher in industrial output (Fig.2).



*preliminary data

Figure 2. Mining industry output in total industrial output in 2010-2014

Generally, since 2012 share of mining industry output in industrial production declined by 1.4 % - from 4.8% to 3.4% in 2014.

Sand, chalk, peal, pebbles, gravel, crushed stone and fragmented stone are the main mining industry products in Rivne region (Table 2).

Table 2

Production of the main products in mining industry, 2010-2014**

Mining industry output	Years				
	2010	2011	2012	2013	2014*
Pebbles, gravel, crushed stone and fragmented stone, thsd m ³	5525,9	6235,1	6344,1	6962,3	6410,9

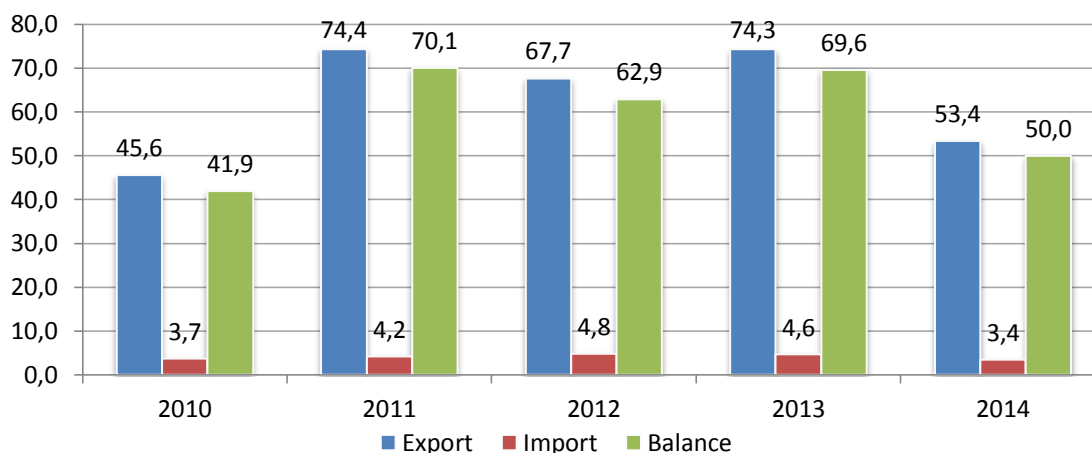
*preliminary data

**Information concerning production of other products is confidential according to the law of Ukraine «On State Statistics».

In 2010 – 2013 extracting of pebbles, gravel, crushed stone and fragmented stone was increasing. However, in January – November 2014 this rate declined by 8,3% and made up 5953,2 m³.

PRODUCT EXPORT AND IMPORT

In January –October 2014, share of mining products export in Rivne region total product export was 12,3%. In Rivne region total product import this rate was 16,3%. The main export articles (99%) are salt, sulphur and stones (Fig.3).



*January – November

Figure 3. Export and import of salt, sulphur and stones, 2010-2014, US \$ million

In January – November 2014 export of mentioned products declined by 28.1% as compared to corresponding period in 2013. Energy products formed the main article of import – approximately 92 % of total import. In 2013 import of energy products was 20 times larger than in 2012. In January – November 2014 this rate was 32,5 times larger than in 2012.

ENTERPRISES OF MINING INDUSTRY

The biggest enterprises of mining industry in Rivne region: «West Kaolin Company» LLC, «Rafalivka Quarry» Public JSC, «Ivano-Dolynskyi Quarry» Public JSC, «Tomashgorod Crushed Stone Plant» Public JSC, «Rokytne Quarry» Public JSC, Tomashgorod Quarry Administration, «Vyriv Quarry» LLC and «Selysche Quarry» LLC are the biggest mining industry enterprises in Rivne region.